



**KENAGRO**

*Partnering With Farmers*

# MANGO

## SPRAY PROGRAM



Kenagro Suppliers Limited



Kenagro Online



+254 112 246 694





# MANGO SPRAY PROGRAM

## CROP PROTECTION

FLUSH SEASON

JUNE - JULY

FLOWERING & FRUIT SETTING

JULY - SEP

FRUIT DEVELOPMENT

OCT - NOV

RIPENING & HARVESTING

DEC - FEB

### DISEASES

Algal Leaf Spots  
(Orange Rusty Spots On The Leaves)



Sooty Mold



Scab



Anthraxnose



Powdery Mildew



**TOPGUARD 500SC** (20ml/20L) | **TABIBU 500SC** (10ml/20L)

**TOPGUARD 500SC** (20ml/20L)

Manage Sooty Mold Through Controlling Sap Sucking And Chewing Insects Like **Whiteflies, Aphids, Leaf Hoppers, Scales, Insects, Mealy Bugs & Psyllids** As They Secrete Honey Dew Onto Which Sooty Mold Mainly Develops. **Apply Pota-K (60-100ml/20L)**

**DEWKLIN 250EC** (15ml/20L) | **BUGATI 500SC** (15ml/20L)

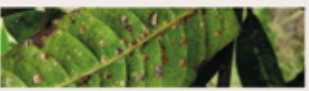
**DEWKLIN 250EC** (15ml/20L)

**TABIBU 500SC** (10ml/20L)

**TOPGUARD 500SC** (20ml/20L) | **DEWKLIN 250EC** (15ml/20L)

### PESTS

Mango Scales



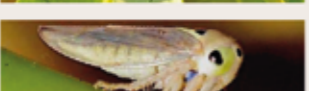
Mango Mealybugs



Mango Seed Weevil



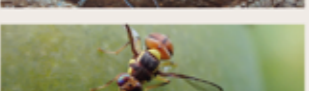
Mango Hoppers



Mango Tree Borer



Fruit Flies  
Thrips



Termites



**ACETAK 200SL** (15ml/20L) | **ARAGON 220ZC** (5-8ml/20L)

**ACETAK TOP 700WG** (2.5g/20L) | **PROTAP 500WP** (40g/20L)

**EMMARON 30SC** (15ml/20L) | **MAY 50EC** (12-15ml/20L)

**ACETAK TOP 700WG** (2.5g/20L)

**REGIME 480EC** (30-40ml/20L) | **ACETAK 200SL** (10ml/20L) | **ARAGON 220ZC** (5-8ml/20L)

**ACETAK TOP 700WG** (2.5g/20L)

**SPIDOR MAX 300SC** (10ml/20L)

**SPIDOR MAX 300SC** (10ml/20L) | **SPIDOR 240SC** (10ml/20L)

**MAY 50EC** (12-15ml/20L)

**EMMARON 30SC** (15ml/20L)

**DRENCHING**

**REGIME 480EC** (30-40ml/20L)

## NUTRITION



**BRILLIANT** (40ml/20L) Promotes vegetative growth in readiness for flowering.

**GENIE GOLD 500SL** (15ml/20L) Stress manager and optimizer, gives vigour to the plant.

**MICROFERT TI** (20ml/20L) Super Booster and induces strong and healthy flower buds and also nice flower colour.

**CABOZINC SC** (30ml/20L) - Prevent flower abortion and promote better fruit setting more flowers are produced.

**CABOZINC SC** (30ml/20L) has 36% Calcium that boosts cell wall turjidity of mango fruits, reduces cases of Blossom Endrot

**FAIDA SC** (20-40ml/20L) For Sweet Taste.

**MICROFERT TI** (20ml/20L) Promotes formation of healthy fruits and ensures fruit consistency in terms of colour, shape, taste and also ensures there is uniform ripening

## WEED CONTROL



**KAUSHA 480SL** (200ml/20L), **PARASTAR 200SL** (100ml/20L) & **WEEDSTAR 300 SL** (100ml/20L) for grasses and broad leaved weeds.

Nut sedges and Oxalis. **PIRATA 100SC** (100ml/20L)

## STICKER

**GOLDEN LEAF** with all sprays: sticker, spreader and translaminar effect. (2ml/20L) **BUT** For Spider mites use (10ml/20L)





**KENAGRO**



**+254 113 803 559**



**sales@kenagrosuppliers.co.ke**



**www.kenagrosuppliers.co.ke**